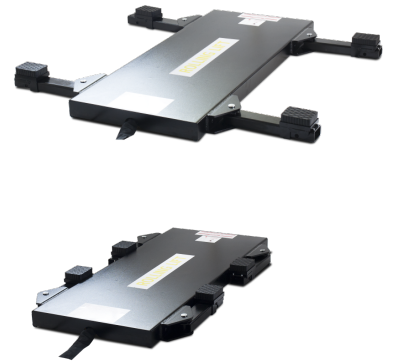


UL LR3T Mobile Rolling Lift



The UnoLiner LR3T Mobile Rolling Lift offers the unique advantage of being able to move the vehicle together with the lift all around the workshop. Place the vehicle on the LR3T, activate its scissor lift, click the wheels into the lift arms, and let its two hydraulic cylinders lower the lift and its wheels to the ground. Operate the lift via its convenient, hydraulic foot pump. The lift's caster wheels provide free movement of the car and rolling the lift throughout the body shop. This way, you'll save time, costs, and space.

Features

- ✓ Saves space
- ✓ 3 ton lifting capacity
- ✓ Easily fitted caster wheelset
- ✓ Rubber slide pads for vehicle placement
- ✓ Lifts vehicle to ideal work height
- ✓ Allows for lift and car mobility in workshop

Technical data

Weight	400	kg
Max. width	1860	mm
Min. width	1000	mm
Max. height	992	mm
Min. height	100	mm
Length	1882	mm
Max. load weight	3000	kg
Pump	300	bar